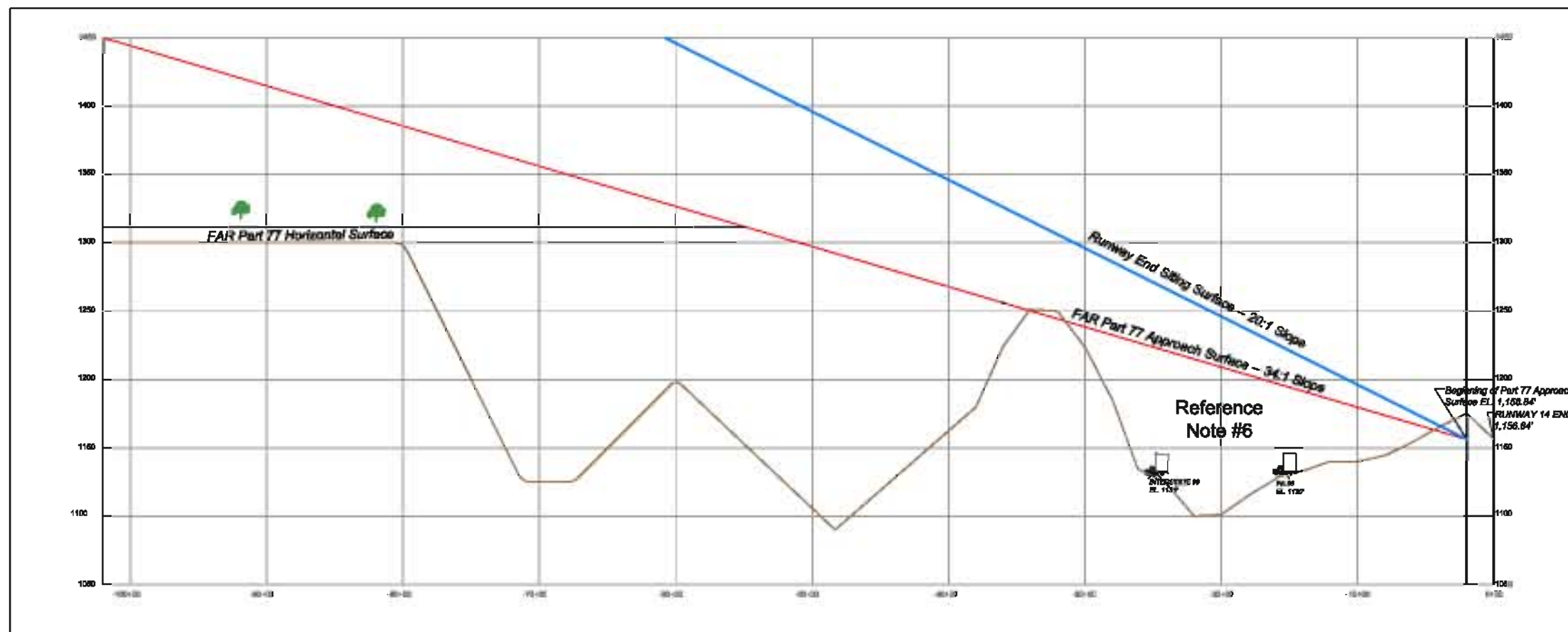
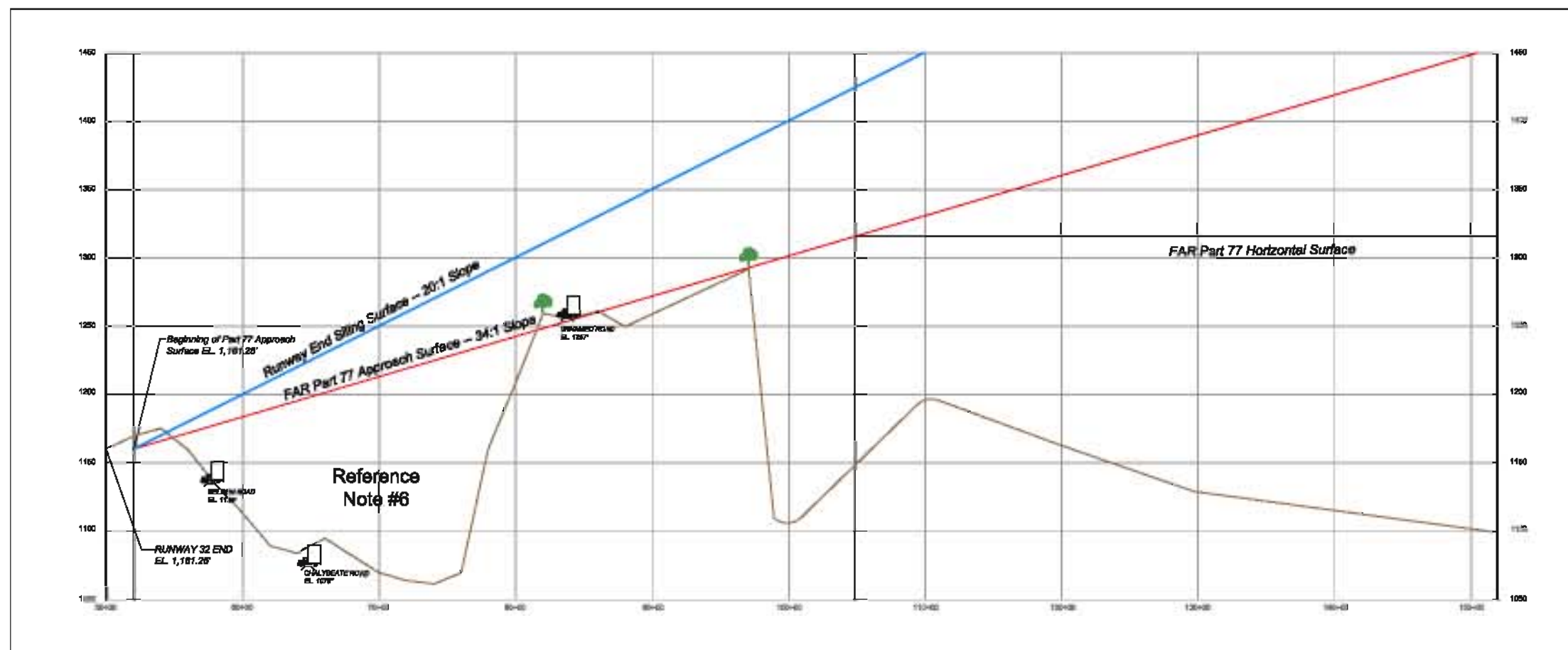


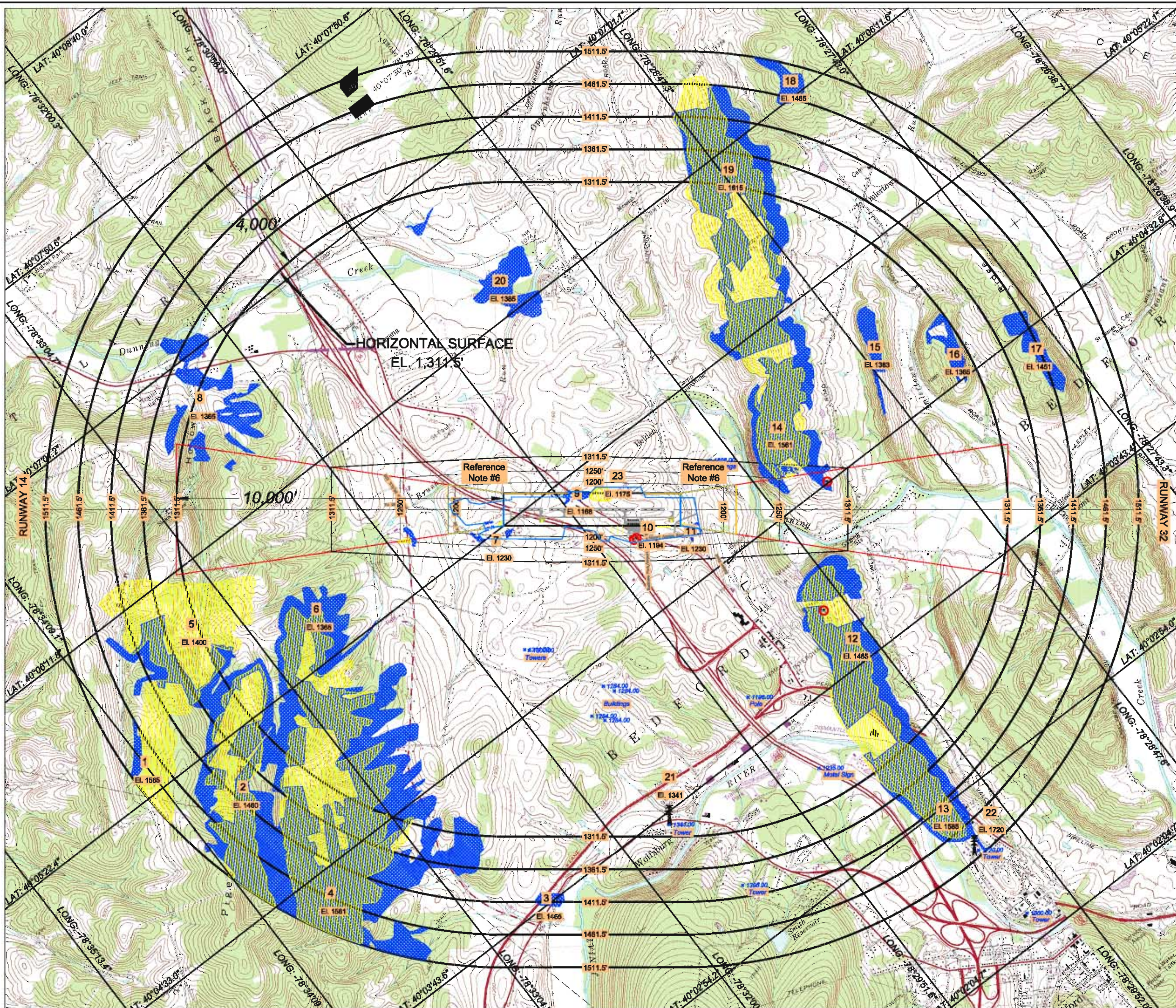
RUNWAY 14



RUNWAY 32



Profile Scale
Vertical - 1" = 1,000'
Horizontal - 1" = 100'



OBSTRUCTION DATA TABLE

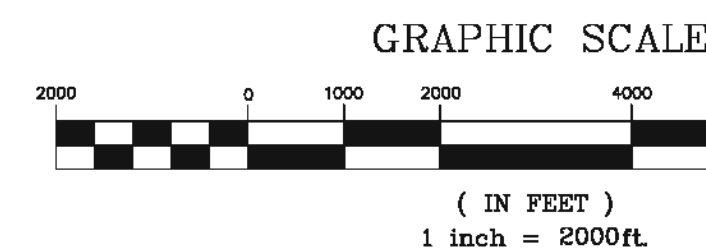
NO.	DESCRIPTION	ELEVATION	PENETRATION	SURFACE	DISPOSITION
1	Ground/Trees	1565.0'	79'	C.S.	Reference Note #9
2	Ground/Trees	1460.0'	49'	C.S.	Reference Note #9
3	Trees	1485.0'	54'	C.S.	Reference Note #9
4	Ground/Trees	1745.0'	100'	C.S.	Reference Note #9
5	Ground	1400.0'	89'	C.S./H.S.	Reference Note #9
6	Ground/Trees	1365.0'	54'	H.S.	Reference Note #9
7	Trees/Pole	1230.6'	30'	T.S.	Reference Note #9
8	Trees	1365.0'	54'	C.S./H.S.	Reference Note #9
9	Trees	1167.8'	N/A	P.S.	Reference Note #9
10	Hangars	1193.5'	18'	P.S.	Reference Note #9
11	Trees	1230.0'	49'	T.S.	Reference Note #9
12	Ground/Trees	1465.0'	154'	H.S.	Lighted
13	Ground/Trees	1585.0'	174'	C.S.	Reference Note #9
14	Ground/Trees	1561.0'	32'/120'/250'	A.S./T.S./H.S.	Existing BOA Waiver/Lighted
15	Trees	1383.0'	72'	H.S.	Reference Note #9
16	Trees	1365.0'	54'	H.S.	Reference Note #9
17	Trees	1451.0'	40'	C.S.	Reference Note #9
18	Trees	1485.0'	21'	C.S.	Reference Note #9
19	Ground/Trees	1615.0'	285'	C.S./H.S.	Reference Note #9
20	Trees	1385.0'	74'	H.S.	Reference Note #9
21	Antenna Tower	1341.0'	29'	H.S.	None - 1990-AEA-316-OE
22	Antenna Tower	1720.0'	220'	C.S.	None - 1986-AEA-1447-OE
23	Ground	1175.2'	15'	P.S./T.S.	Reference Note #9

LEGEND

AERIAL SURFACE BOUNDARY	— 1311.5' —
AERIAL CONTOURS	— 1381.5' —
BUILDING OBSTRUCTIONS	[Red rectangle]
GROUND OBSTRUCTIONS	[Yellow rectangle]
TREE OBSTRUCTIONS	[Blue rectangle]
TREE/GROUND OBSTRUCTIONS	[Blue/Yellow rectangle]
TOWER OBSTRUCTIONS	[Tower symbol]
OBSTRUCTION LIGHTS	[Light symbol]
PART 77 APPROACH SURFACE	A.S. [Red line]
PART 77 HORIZONTAL SURFACE	H.S. [Blue line]
PART 77 CONICAL SURFACE	C.S. [Blue line]
PART 77 TRANSITIONAL SURFACE	T.S. [Blue line]
PART 77 PRIMARY SURFACE	P.S. [Blue line]
RUNWAY PROTECTION ZONE (RPZ)	[Blue line]
ULTIMATE AIRPORT PROPERTY LINE	[Blue line]
ULTIMATE EASEMENT	[Blue line]
FAA 7460 COMPLETED	[Blue line]
ROAD WITH 15' VEHICLE	[Road symbol]

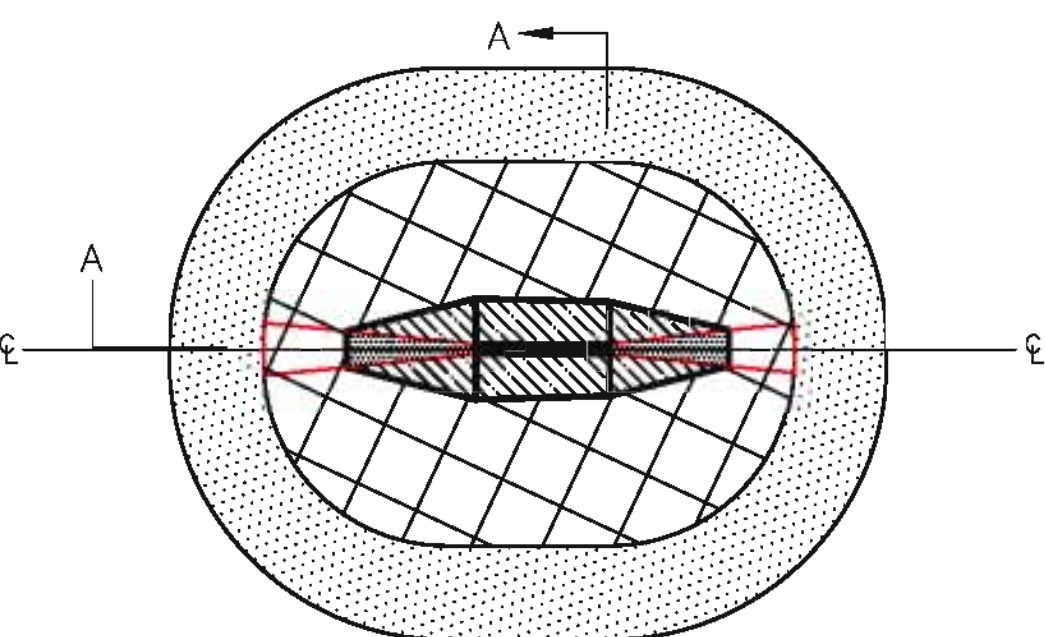
NOTES:

- Base Map composed of two (3) U.S.G.S. Topographic Maps; Bedford, PA quadrangle (1971, photo revised 1987); Everett West, PA quadrangle (1968, photo revised in 1987); Alum Bank, PA quadrangle (1971, photo revised 1987).
- Contour Interval: 20 feet.
- Aerial surfaces are based on FAR Part 77.25, Objects Affecting Navigable Airspace, for an ultimate runway length of 5,005'. The Aerial Contours illustrate the height limitations within each zone.
- Established Airport Elevation: 1,161.00'. Recent survey information indicates the highest point on the usable runway to be 1,161.50'. FAR Part 77 surfaces are based upon an elevation of 1,161.50'.
- Assume 70' for tree heights, 30' for building heights, and 35' for utility pole heights.
- Refer to Inner Portion of the Approach Surface Drawing (Drawing No. ALP-5) for FAR Part 77 Inner Approach Surface details.
- Bedford Township and East Clair Township do not have zoning or any type of height hazard limitation ordinances.
- Refer to Drawing ALP-5 for a runway centerline profile and identification of the runway high and low points.
- New approach procedures are being developed. The final disposition of obstructions and associated aviation easements will be evaluated based upon appropriate design surfaces for the published approaches.



FAA AIRSPACE CASE NO.
2006-AEA-574-NRA

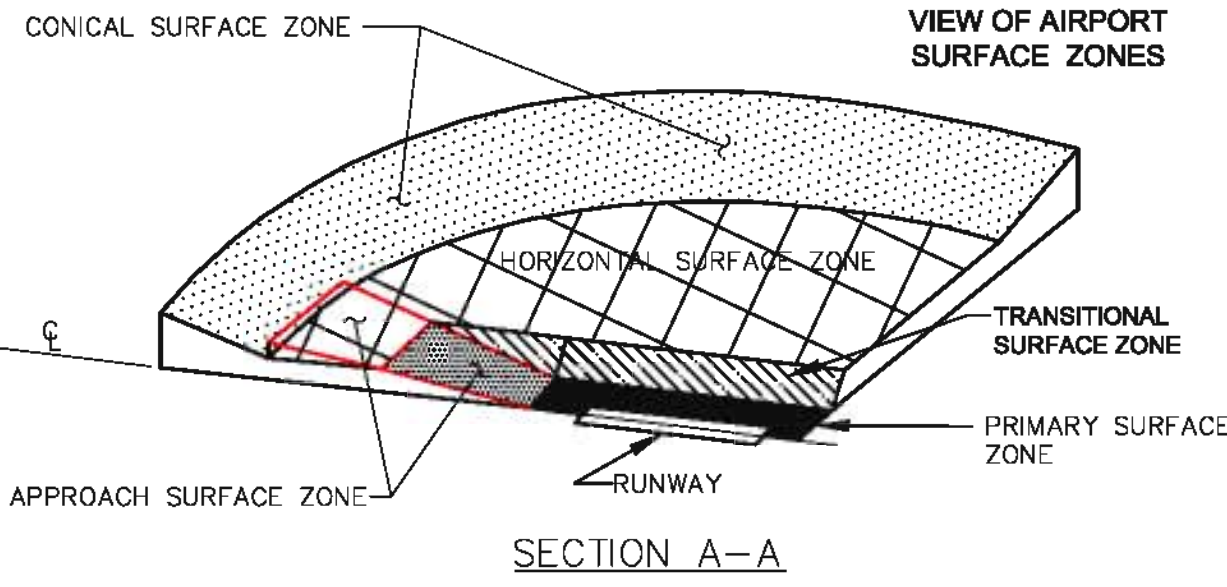
TYPICAL PLAN VIEW OF AIRPORT SURFACE ZONES



FAR PART 77 DIMENSIONS

WIDTH OF PRIMARY SURFACE AND APPROACH SURFACE WIDTH AT INNER END	1,000'
RADIUS OF HORIZONTAL SURFACE	10,000'
APPROACH SURFACE WIDTH AT OUTER END	4,000'
APPROACH SURFACE LENGTH	10,000'
APPROACH SLOPE	34:1
CONICAL SURFACE	4,000'

TYPICAL ISOMETRIC VIEW OF AIRPORT SURFACE ZONES



REV. NO.	ITEM	DATE	SPONSOR APPROVAL	BOA APPROVAL

Kimball
L. Robert Kimball & Associates
Architects and Engineers
615 West Highland Ave.
Ebensburg, Pa. 15931
phone (814) 472-7700
fax (814) 472-7712
email ceckro@kimball.com
web site www.kimball.com

BEDFORD COUNTY AIRPORT

BEDFORD TOWNSHIP	PENNSYLVANIA	
Airport Airspace Drawing		
AGREEMENT NO. BG-04-78	DATE: 11/01/2006	DRAWING NO.
LRK PROJECT NO: 04-1800-0015	DRAWN BY: BAW	ALP - 4
CAD FILE: P:\HMZ Airspace 04-0015.dwg	CHECKED BY: RLD	